

AS5458

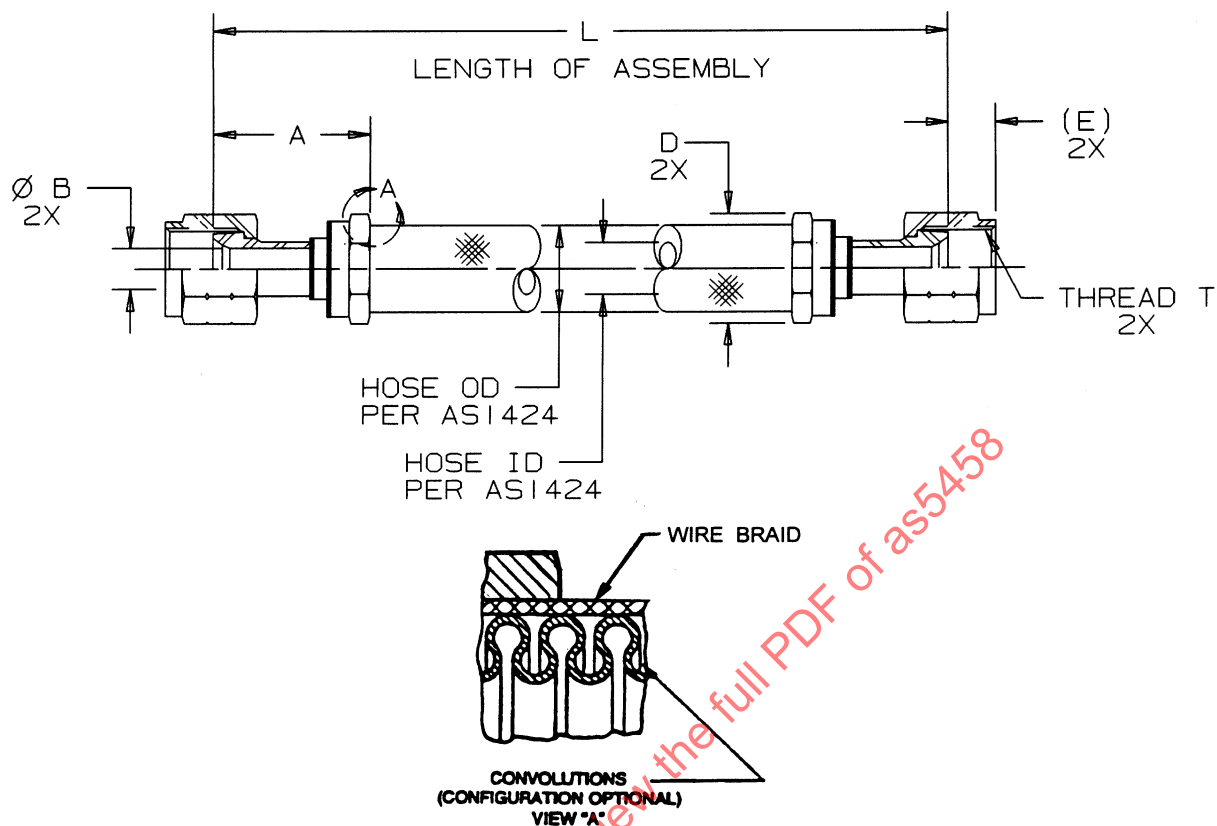
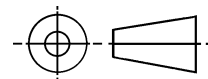
FEDERAL SUPPLY CLASS
4720

FIGURE 1 - HOSE ASSEMBLY

TABLE 1 - ASSEMBLY DIMENSIONS

HOSE ASSEMBLY SIZE CODE	HOSE SIZE (REF)	A MAX	B MIN THRU /8/	D MAX	(E) NOM	THREAD T PER AS8879 (ISO 3161) (REF)
04	.250	1.34	.141	.900	.372	.4375-20UNJF-3B
05	.312	1.40	.197	1.100	.375	.5000-20UNJF-3B
06	.375	1.48	.250	1.200	.375	.5625-18UNJF-3B
08	.500	1.58	.360	1.300	.438	.7500-16UNJF-3B
10	.625	1.71	.455	1.500	.515	.8750-14UNJF-3B
12	.750	1.83	.568	1.740	.562	1.0625-12UNJ-3B
16	1.000	2.02	.760	2.300	.620	1.3125-12UNJ-3B
20	1.250	2.17	.920	2.850	.620	1.6250-12UNJ-3B

THIRD ANGLE PROJECTION



CUSTODIAN: SAE G-3/G-3D

PROCUREMENT SPECIFICATION: /2/ AS1424

SAE The Engineering Society
For Advancing Mobility
Land Sea Air and Space
INTERNATIONAL
400 Commonwealth Drive, Warrendale, PA 15096-0001

AEROSPACE STANDARD

HOSE ASSEMBLY, METAL - MEDIUM PRESSURE,
FLARED, WELDED, STRAIGHT TO STRAIGHT

AS5458
SHEET 1 OF 4

ISSUED 2001-03

SAE Technical Standards Board Rules provide that: "This report is published by SAE to advance the state of technical and engineering sciences. The use of this report is entirely voluntary, and its applicability and suitability for any particular use, including any patent infringement arising therefrom, is the sole responsibility of the user."

SAE reviews each technical report at least every five years at which time it may be reaffirmed, revised, or cancelled. SAE invites your written comments and suggestions.

TABLE 2 - ASSEMBLY LENGTH TOLERANCE

HOSE ASSEMBLY LENGTH	LENGTH TOLERANCE
UNDER 10 in	±.062 in
10 TO 36 in EXCLUSIVE	±.125 in
36 TO 50 in EXCLUSIVE	±.250 in
50 in AND OVER	±1%

TABLE 3 - HOSE ASSEMBLY PHYSICAL CHARACTERISTIC

HOSE SIZE CODE	70 °F /5/ OPERATING PRESSURE PSI MAX	70 °F /5/ PROOF PRESSURE PSI MIN	70 °F /5/ BURST PRESSURE PSI MIN
04	2000	3000	8000
05	1800	2700	7200
06	1600	2400	6400
08	1400	2100	5600
10	1200	1800	4800
12	1050	1575	4200
16	800	1200	3200
20	550	825	2200

TABLE 4 - SPHERICAL BALL SIZE
FOR DETERMINING MINIMUM
HOSE ASSEMBLY ID /8/

HOSE SIZE	STRAIGHT FITTING
04	.127
05	.177
06	.225
08	.324
10	.410
12	.511
16	.684
20	.828

TABLE 5 - WEIGHTS (NOM)

HOSE SIZE	HOSE LB/IN	STANDARD FITTING (LB) STRAIGHT
04	.016	.05
05	.018	.07
06	.020	.08
08	.028	.13
10	.038	.18
12	.042	.29
16	.058	.44
20	.072	.62

NOTES:

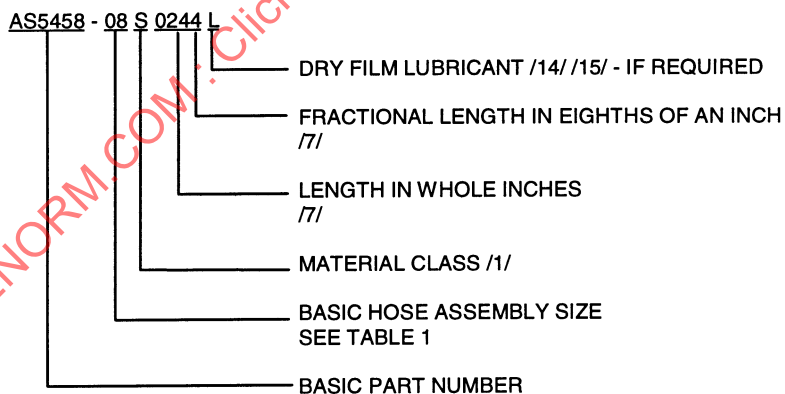
/1/ MATERIALS:

- a. CLASS "N": INNERTUBE - NICKEL ALLOY TYPE 625
ALL OTHER COMPONENTS - 321 CORROSION RESISTANT STEEL
- b. CLASS "S": ALL COMPONENTS - 321 CORROSION RESISTANT STEEL

/2/ THIS HOSE ASSEMBLY SHALL BE QUALIFIED IN ACCORDANCE WITH PROCUREMENT SPECIFICATION AS1424. SEE NOTE /13/. USERS OF THIS STANDARD ARE ADVISED TO CONTROL SOURCE APPROVAL(S) BY STANDARD PAGE SUPPLEMENT SHEET OR SIMILAR MEANS.

CHANGE-OVER FROM USER-QPL TO PRI-QPL SHALL BE PERFORMED IN ACCORDANCE WITH AS1424 AND COMPLETED WITHIN SIX MONTHS FROM THE DATE OF ISSUE OF PRI QPL-AS1424. USERS OF THIS STANDARD SHALL PROCURE THIS PRODUCT FROM ACCREDITED MANUFACTURER(S), OR THEIR ACCREDITED DISTRIBUTOR(S), AS LISTED IN THE PERFORMANCE REVIEW INSTITUTE (PRI) QUALIFIED PRODUCTS LIST QPL-AS1424 FOR THIS STANDARD.

3. CONSTRUCTION AND PERFORMANCE PER AS1424. FITTINGS SHALL BE PERMANENTLY ATTACHED TO THE HOSE.
4. THESE ASSEMBLIES ARE INTENDED FOR USE IN LOW AND MEDIUM PRESSURE PNEUMATIC SYSTEMS UP TO 850 °F WITH SHORT EXCURSIONS TO 1200 °F. MAXIMUM RATED OPERATING PRESSURE IS DEPENDENT ON AMBIENT OPERATING TEMPERATURE AND CAN BE DETERMINED FROM AS1424.
- /5/ SEE AS1424 FOR PRESSURES AT ELEVATED TEMPERATURE.
6. MARKING SHALL BE PER AS1424 ON A STAINLESS STEEL BAND NOT OVER 1.0 in WIDE OR ON THE END FITTINGS. THE CHARACTERS SHALL BE A MINIMUM OF .060 HIGH. THE BAND SHALL BE SO DESIGNED AS TO REMAIN TIGHT ON THE HOSE TO PREVENT RELATIVE MOTION AND CHAFING. IT SHALL BE OF SUFFICIENT STRENGTH TO PREVENT REMOVAL BY HAND.
- /7/ LENGTH "L" IS A FOUR DIGIT NUMBER OF WHICH THE FIRST THREE DIGITS DESCRIBE THE HOSE ASSEMBLY LENGTH IN WHOLE INCHES, AND THE FOURTH DIGIT, IN FRACTION OF AN INCH IN EIGHTHS. SEE TABLE 2 FOR ASSEMBLY LENGTH TOLERANCE.
- /8/ A TRUE CIRCULAR CROSS SECTION IS NOT REQUIRED THROUGH THE FITTING ID. HOWEVER, THE APPLICABLE, OR LARGER, BALL DIAMETER LISTED IN TABLE 4 MUST BE CAPABLE OF PASSING THROUGH THE ASSEMBLY.
9. DIMENSIONS AND TOLERANCING: ASME Y14.5M-1994.
10. THIS PART STANDARD TAKES PRECEDENCE IN CASE OF CONFLICT.
11. EXAMPLE OF PART NUMBER:



12. FITTING ENDS SHALL CONFORM TO AS1708 AND MATE WITH AS4395. STANDARD COUPLING NUTS SHALL BE IN ACCORDANCE WITH OR EQUIVALENT TO AN818 OR AS4370.

/13/ A CLASS "N" ASSEMBLY MAY BE SUPPLIED IN LIEU OF CLASS "S" TO MEET AS1424 REQUIREMENTS.