

---

---

**Textiles — Determination of short-chain chlorinated paraffins (SCCP) and middle-chain chlorinated paraffins (MCCP) in textile products out of different matrices by use of gas chromatography negative ion chemical ionization mass spectrometry (GC-NCI-MS)**

*Textiles — Détermination de paraffines chlorées à chaîne courte (PCCC) et de paraffines chlorées à chaîne moyenne (PCCM) dans des produits textiles sur différentes matrices par chromatographie en phase gazeuse couplée à la spectrométrie de masse avec ionisation chimique négative (GC-NCI-MS)*



STANDARDSISO.COM : Click to view the full PDF of ISO 22818:2021



**COPYRIGHT PROTECTED DOCUMENT**

© ISO 2021

All rights reserved. Unless otherwise specified, or required in the context of its implementation, no part of this publication may be reproduced or utilized otherwise in any form or by any means, electronic or mechanical, including photocopying, or posting on the internet or an intranet, without prior written permission. Permission can be requested from either ISO at the address below or ISO's member body in the country of the requester.

ISO copyright office  
CP 401 • Ch. de Blandonnet 8  
CH-1214 Vernier, Geneva  
Phone: +41 22 749 01 11  
Email: [copyright@iso.org](mailto:copyright@iso.org)  
Website: [www.iso.org](http://www.iso.org)

Published in Switzerland

# Contents

Page

Foreword	iv
Introduction	v
<b>1 Scope</b>	<b>1</b>
<b>2 Normative references</b>	<b>1</b>
<b>3 Terms and definitions</b>	<b>1</b>
<b>4 Principle</b>	<b>1</b>
<b>5 Reagents</b>	<b>1</b>
<b>6 Apparatus</b>	<b>2</b>
<b>7 Preparation of test specimens</b>	<b>3</b>
<b>8 Procedure</b>	<b>3</b>
8.1 Extraction of test specimen	3
8.2 Sulfuric acid clean-up	3
8.3 Preparation of the calibration solutions	3
8.3.1 Preparation of SCCPs calibration solution (5 µg/ml) with 59 % Cl	3
8.3.2 Preparation of SCCPs calibration solution (50 µg/ml) with 59 % Cl	3
8.3.3 Preparation of SCCPs calibration solution (75 µg/ml) with 59 % Cl	3
8.3.4 Preparation of MCCPs calibration solution (5 µg/ml) with 55 % Cl	3
8.3.5 Preparation of MCCPs calibration solution (50 µg/ml) with 55 % Cl	4
8.3.6 Preparation of MCCPs calibration solution (75 µg/ml) with 55 % Cl	4
8.3.7 Daily calibration	4
8.4 GC-MS determination	4
<b>9 Expression of results</b>	<b>5</b>
9.1 Evaluation	5
9.2 Determination of the recovery rate of the IS	5
9.3 Interferences	5
9.3.1 Interferences of MCCPs masses	5
9.3.2 Interferences of SCCPs masses	6
<b>10 Test report</b>	<b>6</b>
<b>Annex A (normative) Integration with peak shape evaluation (PSE)</b>	<b>7</b>
<b>Annex B (informative) Chromatographic parameters</b>	<b>12</b>
<b>Annex C (informative) Reliability of method</b>	<b>14</b>
<b>Bibliography</b>	<b>15</b>

## Foreword

ISO (the International Organization for Standardization) is a worldwide federation of national standards bodies (ISO member bodies). The work of preparing International Standards is normally carried out through ISO technical committees. Each member body interested in a subject for which a technical committee has been established has the right to be represented on that committee. International organizations, governmental and non-governmental, in liaison with ISO, also take part in the work. ISO collaborates closely with the International Electrotechnical Commission (IEC) on all matters of electrotechnical standardization.

The procedures used to develop this document and those intended for its further maintenance are described in the ISO/IEC Directives, Part 1. In particular, the different approval criteria needed for the different types of ISO documents should be noted. This document was drafted in accordance with the editorial rules of the ISO/IEC Directives, Part 2 (see [www.iso.org/directives](http://www.iso.org/directives)).

Attention is drawn to the possibility that some of the elements of this document may be the subject of patent rights. ISO shall not be held responsible for identifying any or all such patent rights. Details of any patent rights identified during the development of the document will be in the Introduction and/or on the ISO list of patent declarations received (see [www.iso.org/patents](http://www.iso.org/patents)).

Any trade name used in this document is information given for the convenience of users and does not constitute an endorsement.

For an explanation of the voluntary nature of standards, the meaning of ISO specific terms and expressions related to conformity assessment, as well as information about ISO's adherence to the World Trade Organization (WTO) principles in the Technical Barriers to Trade (TBT), see [www.iso.org/iso/foreword.html](http://www.iso.org/iso/foreword.html).

This document was prepared by Technical Committee ISO/TC 38, *Textiles*, in collaboration with the European Committee for Standardization (CEN) Technical Committee CEN/TC 248, *Textiles and textile products*, in accordance with the Agreement on technical cooperation between ISO and CEN (Vienna Agreement).

Any feedback or questions on this document should be directed to the user's national standards body. A complete listing of these bodies can be found at [www.iso.org/members.html](http://www.iso.org/members.html).

## Introduction

Short-chain chlorinated paraffins (SCCPs) ( $C_{10}$ - $C_{13}$ ; chlorine content > 48 %) are listed by the Stockholm Convention on Persistent Organic Pollutants.

In Europe, according to REGULATION (EU) 2019/1021<sup>[1]</sup> of the European Parliament and of the Council of 20 June 2019 on persistent organic pollutants alkanes  $C_{10}$ - $C_{13}$ , chloro [short-chain chlorinated paraffins (SCCPs)] (CAS no. 85535-84-8) as constituents of articles are prohibited. Articles containing SCCPs in concentrations lower than 0,15 % by weight are allowed.

Furthermore, it became industrial practice to restrict alkanes  $C_{14}$ - $C_{17}$ , known as medium-chain chlorinated paraffins (MCCPs) as well.

SCCPs and MCCPs are used as flame retardants in textiles, as plasticizers in polymers and as finishing agents in leather. SCCPs and MCCPs are an issue for textile manufacturers and retailers due to their use within fabrics, coated fabrics, plastisol prints, buttons, leather patches, etc.

The analysis of chlorinated paraffins is a great challenge. The technical compounds are always complex mixtures of substances with different chain lengths and different chlorination degrees. Gas chromatography (GC) separation of these mixtures show an overlapping part of chain length (between short and middle chained) and of chlorination degrees, too. The responses of the different chlorination degrees vary in a big range. This document describes a procedure to get comparable results for SCCPs and MCCPs with a defined calibration standard of the most typical used mixtures (59 % chlorination degree for SCCPs and 55 % chlorination degree for MCCPs) and using four ion traces for SCCPs and four ion traces for MCCPs with gas chromatography negative ion chemical ionization mass spectrometry (GC-NCI-MS).

[STANDARDSISO.COM](https://standardsiso.com) : Click to view the full PDF of ISO 22818:2021

# Textiles — Determination of short-chain chlorinated paraffins (SCCP) and middle-chain chlorinated paraffins (MCCP) in textile products out of different matrices by use of gas chromatography negative ion chemical ionization mass spectrometry (GC-NCI-MS)

**WARNING** — This document calls for the use of substances/procedures that may be injurious to the health/environment if appropriate conditions are not observed. It refers only to technical suitability and does not absolve the user from legal obligations relating to health and safety/environment at any stage.

## 1 Scope

This document specifies a chromatographic method to determine the amount of short-chain chlorinated paraffins (SCCPs: C<sub>10</sub>-C<sub>13</sub>) and middle-chain chlorinated paraffins (MCCPs: C<sub>14</sub>-C<sub>17</sub>) in textile articles, especially in polymer of the coated fabrics, prints made of polymer and buttons made of polymer (e.g. polyvinylchloride) by means of solvent extraction and gas chromatography negative ion chemical ionization mass spectrometry (GC-NCI-MS).

## 2 Normative references

The following documents are referred to in the text in such a way that some or all of their content constitutes requirements of this document. For dated references, only the edition cited applies. For undated references, the latest edition of the referenced document (including any amendments) applies.

ISO 4787, *Laboratory glassware — Volumetric instruments — Methods for testing of capacity and for use*

## 3 Terms and definitions

No terms and definitions are listed in this document.

ISO and IEC maintain terminological databases for use in standardization at the following addresses:

- ISO Online browsing platform: available at <https://www.iso.org/obp>
- IEC Electropedia: available at <http://www.electropedia.org/>

## 4 Principle

The test specimens are extracted with toluene, followed by a sulfuric acid clean-up. The analysis is carried out using GC-NCI-MS with a defined calibration standard and eight typical ion traces.

It shall be emphasized that this method is a method of convention. All steps shall be performed as described. Variations in procedure induce deviant results.

## 5 Reagents

Unless otherwise specified, analytical grade chemicals shall be used.

### 5.1 *n*-Hexane, CAS no. 110-54-3.

**5.2 Toluene**, CAS no. 108-88-3.

**5.3 Internal standard (IS) Solution A:** Lindane, CAS no. 58-89-9 as internal standard in solution (IS), about  $\rho = 100 \mu\text{g}$  of IS/ml in *n*-hexane.

**5.4 IS Solution B:** Dilute IS Solution A (5.3) 1 to 50. Lindane, CAS no. 58-89-9 as internal standard in solution (IS), about  $\rho = 2 \mu\text{g}$  of IS/ml in *n*-hexane.

**5.5 Concentrated sulfuric acid** ( $\rho = 1,84 \text{ g/ml}$  at  $20^\circ\text{C}$ ), CAS no. 7664-93-9.

## 5.6 Standard solutions

**5.6.1 SCCPs 55,5 % chlorination degree (Cl)**, CAS no. 85535-84-8, technical grade,  $\rho = 100 \mu\text{g/ml}$  cyclohexane.

**5.6.2 SCCPs 63 % Cl**, CAS no. 85535-84-8, technical grade,  $\rho = 100 \mu\text{g/ml}$  cyclohexane.

**5.6.3 MCCPs 52 % Cl**, CAS no. 85535-85-9, technical grade,  $\rho = 100 \mu\text{g/ml}$  cyclohexane.

**5.6.4 MCCPs 57 % Cl**, CAS no. 85535-85-9, technical grade,  $\rho = 100 \mu\text{g/ml}$  cyclohexane.

NOTE Commercial solutions are available on the market.

## 6 Apparatus

The usual laboratory equipment and laboratory glassware, according to ISO 4787, shall be used, in addition to the following.

**6.1 Pipettes**, in required sizes and variable pipettes.

**6.2 Analytical balance**, with a precision of at least 1 mg.

**6.3 Glass vials**, tightly sealable with lids suitable for solvent extraction, e.g. 20 ml.

**6.4 Glass GC-vials**, tightly sealable with lids suitable for sulfuric acid clean-up, e.g. 2 ml.

**6.5 Ultrasonic bath**, with controllable heating capable of maintaining a temperature of about  $60^\circ\text{C}$ .

**6.6 Evaporation apparatus**, such as heating block with a controlled flow of gas over the liquid or vacuum rotary evaporator with vacuum control.

**6.7 Membrane filter**, pore width  $0,45 \mu\text{m}$ .

**6.8 Vortex agitator**.

**6.9 Shaker**, ensuring an efficient mixing of the phases.

NOTE Horizontal shaker with minimum frequency of  $5 \text{ s}^{-1}$ , path length 2 cm to 5 cm has been found suitable.

**6.10 Gas chromatograph coupled to a negative chemical ionization mass selective detector (GC-NCI-MS) system.**

NOTE A description of the chromatographic equipment is given in [Annex B](#).



## 7 Preparation of test specimens

The test specimen shall consist of a single material type (e.g. textile, polymer, etc.), which is tested separately.

Cut the homogenous material samples into pieces of about 0,3 cm to 0,5 cm edge length.

NOTE Up to 3 test specimens (of equal mass) of the same material type can be tested together taking into consideration the limits of detection and quantification.

## 8 Procedure

### 8.1 Extraction of test specimen

About  $(0,50 \pm 0,01)$  g test specimen is weighed with the analytical balance (6.2) into a sealable vessel (6.3). Add 5 ml toluene (5.2). If the test specimen is not sufficiently immersed in the extraction solvent, add more solvent (5.2) and report the final volume for calculation of SCCPs and MCCPs amount. Close the vessel tightly and extract the test specimen at about 60 °C for  $(60 \pm 5)$  min in an ultrasonic bath (6.5). Cool down to room temperature (less than 27 °C).

### 8.2 Sulfuric acid clean-up

Evaporate 2 ml of the toluene extract (8.1) to dryness, add 2 ml IS solution B (5.4). Redissolve the residue by agitating for 30 s in the vortex agitator (6.8) or for 5 min in the horizontal shaker (6.9), filtrate the solution through a membrane filter (6.7). IS solution shall be added after extraction because its concentration can be affected by the extraction in different ways than SCCPs/MCCPs (due to their different chemical properties). Take 1 ml of the filtrate and add 0,5 ml sulfuric acid (5.5) in a glass vial (6.4), shake for 30 min with horizontal shaker. An efficient mixing of the phases shall be ensured. After separation of the phases (optional centrifugation) put 0,5 ml of the upper phase (*n*-hexane) into another vial, seal the vial and analyse the extract.

### 8.3 Preparation of the calibration solutions

#### 8.3.1 Preparation of SCCPs calibration solution (5 µg/ml) with 59 % Cl

Transfer 53,3 µl of SCCPs 55,5 % Cl standard solution (5.6.1) and 46,7 µl SCCPs 63 % Cl standard solution (5.6.2) into a 2 ml volumetric flask. 40 µl IS solution A (5.3) is added and the flask is filled to mark with *n*-hexane (5.1).

#### 8.3.2 Preparation of SCCPs calibration solution (50 µg/ml) with 59 % Cl

Transfer 533 µl of SCCPs 55,5 % Cl standard solution (5.6.1) and 467 µl SCCPs 63 % Cl standard solution (5.6.2) into a 2 ml volumetric flask. 40 µl IS solution A (5.3) is added and the flask is filled to mark with *n*-hexane (5.1).

#### 8.3.3 Preparation of SCCPs calibration solution (75 µg/ml) with 59 % Cl

Transfer 800 µl of SCCPs 55,5 % Cl standard solution (5.6.1) and 700 µl SCCPs 63 % Cl standard solution (5.6.2) into a 2 ml volumetric flask. 40 µl IS solution A (5.3) is added and the flask is filled to mark with *n*-hexane (5.1).

#### 8.3.4 Preparation of MCCPs calibration solution (5 µg/ml) with 55 % Cl

40 µl of MCCPs 52 % Cl standard solution (5.6.3) and 60 µl MCCPs 57 % Cl standard solution (5.6.4) put into a 2 ml volumetric flask. 40 µl IS solution A (5.3) is added and the flask is filled to mark with *n*-hexane (5.1).

### 8.3.5 Preparation of MCCPs calibration solution (50 µg/ml) with 55 % Cl

400 µl of MCCPs 52 % Cl standard solution (5.6.3) and 600 µl MCCPs 57 % Cl standard solution (5.6.4) put into a 2 ml volumetric flask. 40 µl IS solution A (5.3) is added and the flask is filled to mark with *n*-hexane (5.1).

### 8.3.6 Preparation of MCCPs calibration solution (75 µg/ml) with 55 % Cl

600 µl of MCCPs 52 % Cl standard solution (5.6.3) and 900 µl MCCPs 57 % Cl standard solution (5.6.4) put into a 2 ml volumetric flask. 40 µl IS solution A (5.3) is added and the flask is filled to mark with *n*-hexane (5.1).

### 8.3.7 Daily calibration

It is necessary to use at least a three-point-calibration, see 8.3.1 to 8.3.6, each of these calibration solutions shall be analysed separately. Calibrate SCCPs and MCCPs separately.

Perform quantification with internal standard correction.

For long sequences it can be necessary to calibrate more than once. Check the necessity of calibration by using quality control samples.

## 8.4 GC-MS determination

The extract (see 8.2) shall be analysed using GC-NCI-MS (6.10). An example of a suitable GC-NCI-MS method is given in B.1.

Inlet system shall be in a clean state and optimized, see Figures in B.2.

In Table 1, the ions are listed which should be used for quantification of SCCPs and MCCPs. In Table 2, the ions are mentioned, which can be used for the IS Lindane (5.3).

For calculation of the results, the following steps should be performed.

- Sum up the quantifier peak areas of the different ions from the three calibration standards ( $m/z$  347,  $m/z$  361,  $m/z$  375 and  $m/z$  389 for SCCP and  $m/z$  403,  $m/z$  417,  $m/z$  431 and  $m/z$  445 for MCCP).
- Calculate a response factor for each of the three calibration standards under consideration of the area of the internal standard.
- Sum up the quantifier peak areas of the different ions from the sample and form a response factor in the same way.
- Plot a calibration curve with the response factor on the *y*-axis and the concentration of the calibration standards on the *x*-axis.
- Calculate the response factor for the sample in the same way as for the calibration standards and calculate the concentration of the sample in µg/ml using the calibration curve.
- Determine the amount of the SCCP and MCCP in mg/kg under consideration of the dilution factor and the sample amount.

Even if one or more chain length peaks are missing, assume the test specimen as positive for SCCPs or MCCPs.

To get a quantitative result, each peak area of the extract chromatogram shall be below the highest calibration point, if not dilute the extract with IS solution B (5.4) in this range or specify the result is bigger than the calculated result. C<sub>12</sub>Cl<sub>7</sub> qualifier and quantifier ions could and should be switched due to interferences of  $m/z$  375. C<sub>17</sub>Cl<sub>7</sub> can be critical due to interferences and low response.

**Table 1 — Masses for quantification and qualification of SCCPs and MCCPs**

CP-group	Substance	Quantifier <i>m/z</i>	Qualifier <i>m/z</i>
SCCPs	C <sub>10</sub> Cl <sub>7</sub>	347	349
	C <sub>11</sub> Cl <sub>7</sub>	361	363
	C <sub>12</sub> Cl <sub>7</sub>	375	377
	C <sub>13</sub> Cl <sub>7</sub>	389	391
MCCPs	C <sub>14</sub> Cl <sub>7</sub>	403	405
	C <sub>15</sub> Cl <sub>7</sub>	417	419
	C <sub>16</sub> Cl <sub>7</sub>	431	433
	C <sub>17</sub> Cl <sub>7</sub>	445	447

**Table 2 — Masses for quantification and qualification of the internal standard Lindane (5.3)**

Lindane IS	Quantifier <i>m/z</i>	Qualifier <i>m/z</i>
possible ions	325	327
possible ions	255	253
possible ions	255	257

## 9 Expression of results

### 9.1 Evaluation

The peak shape evaluation (PSE) have been successfully tested and used. The integration shall be done with PSE, in accordance with [Annex A](#). Results of an interlaboratory trial and the reliability of the method are shown in [Annex C](#).

After assessing the peak shape of the sample ion by taking the peak shape of the referring ion of the standard into account, the peak is integrated in the retention time range of the standard peak. Overlays by interfering ions can thereby be avoided. Peaks with not matching peak shape are rejected and will not be integrated.

### 9.2 Determination of the recovery rate of the IS

The recovery of the internal standard in the extracts should be >60 % regarding to the area of the peak of the internal standard of the calibration. If the recovery is not sufficient, the step [8.2](#) of the procedure should be repeated and the extract shall be analysed using GC-NCI-MS. If the recovery is less than 60 % the second time, this should be noted in the test report.

### 9.3 Interferences

#### 9.3.1 Interferences of MCCPs masses

Quantifier masses 431 and 445 shall be quantified only if their area is above 10 % of the quantifier masses 403 or 417 and the masses are not disturbed (peak shape control). See [A.2](#).

C<sub>17</sub>Cl<sub>7</sub> quantifier (*m/z* 445) shows very low response and show overlay with SCCPs ions, therefore areas should be rejected, if interferences by SCCPs are noticed.

Masses used for MCCPs determination can be interfered by higher concentrations of SCCPs (> 1 %). In this case, the MCCPs result should be set to "n.t." with the comment: "Cannot be determined due to interferences with SCCP in concentrations above 1 %".

### 9.3.2 Interferences of SCCPs masses

C<sub>11</sub>Cl<sub>7</sub> qualifier ( $m/z$  363) can show a massive interference of high MCCPs contents. If peak shape and retention time fits it is possible to ignore the divergent quantifier/qualifier ratio. It should be noted in the test report.

C<sub>12</sub>Cl<sub>7</sub> quantifier ( $m/z$  375) can also show interferences on high MCCPs contents, in this case quantifier and qualifier can be switched. It should be noted in the test report.

## 10 Test report

The test report shall include at least the following information:

- a) a reference to this document, ISO 22818:2021;
- b) all details necessary for complete identification of the test specimen;
- c) date of receipt and date of analysis;
- d) amounts of detected SCCPs and MCCPs reported in mg/kg;
- e) deviations from agreement of evaluation or from the procedure should be specified.

STANDARDSISO.COM : Click to view the full PDF of ISO 22818:2021

## Annex A (normative)

### Integration with peak shape evaluation (PSE)

#### A.1 Dilution

The total ion chromatogram (TIC) should be roughly in the range of the 59 % SCCPs-standard solution resp. 55 % MCCPs-standard solution ( $c = 50 \mu\text{g/ml}$ ), concerning abundance (height).

#### A.2 Peak shape evaluation (PSE)

- Peaks are evaluated with reference to the corresponding peaks of the calibration standard (see [Figures A.1 to A.8](#)), regarding: retention time, peak shape, quantifier/qualifier ratio.
- Peak maxima distribution and whole shape shall be evaluated visually.
- Non-matching peaks should be completely rejected, (see [Figures A.4 and A.8](#)).
- Partially matching peaks: only the matching area should be integrated (see [Figure A.3](#) example for  $m/z$  347, and [Figure A.7](#) example for  $m/z$  431).
- Matching peaks are integrated over their complete retention time range (see [Figure A.2](#) and [Figure A.6](#)). If any obvious overlays or interferences are detected, these should be excluded from integration as far as possible.
- MCCPs show low response for  $m/z$  445 and  $m/z$  447 and the shape is not so significant, if there are other typical shapes for the other ions of MCCPs, integrate the chromatograms of the ions  $m/z$  445 and  $m/z$  447 over the retention-time range of the standard peak (see [Figure A.6](#)).

#### A.3 Quantifier/Qualifier ratio

Quantifier/Qualifier ratio should be corresponding to the ratio of the standard (a deviation of  $\pm 30\%$  is acceptable).

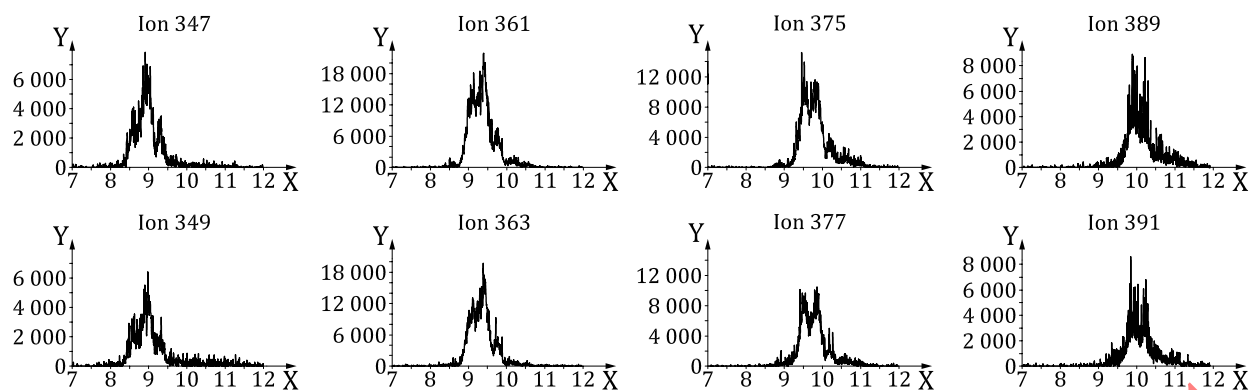
$\text{C}_{11}\text{Cl}_7$  Qualifier ( $m/z$  363) can show a massive overload on high MCCPs contents.  $\text{C}_{12}\text{Cl}_7$  Quantifier ( $m/z$  375) can also show interferences on high MCCPs contents.  $\text{C}_{17}\text{Cl}_7$  Quantifier ( $m/z$  445) shows very low response and shows an overlay with SCCPs ions, therefore areas should be rejected, if interferences by SCCPs are noticed.

In [Figure A.1](#) the used ion traces of SCCPs standard 59 % Cl are seen.

In [Figure A.2](#) examples for matching samples are compared with SCCPs standard 59 % Cl.

Always the upper chromatogram shows the standard, the lower chromatogram shows the sample.

In [Figure A.3](#) examples of partly matched samples are compared with SCCPs standard 59 % Cl. In [Figure A.4](#) examples of samples with no match are compared with SCCPs standard 59 % Cl.

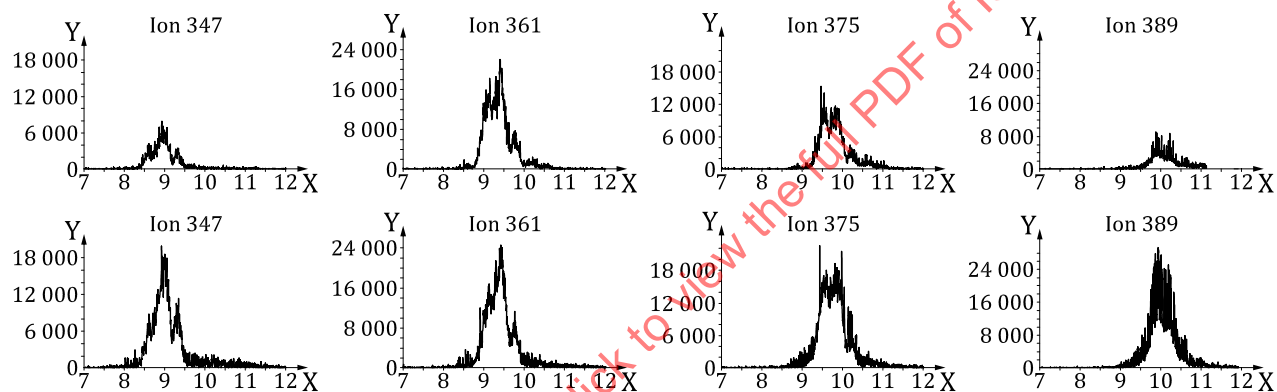


**Key**

X time/min

Y abundance/counts

**Figure A.1 — SCCP standard 59 % Cl, different ion traces**

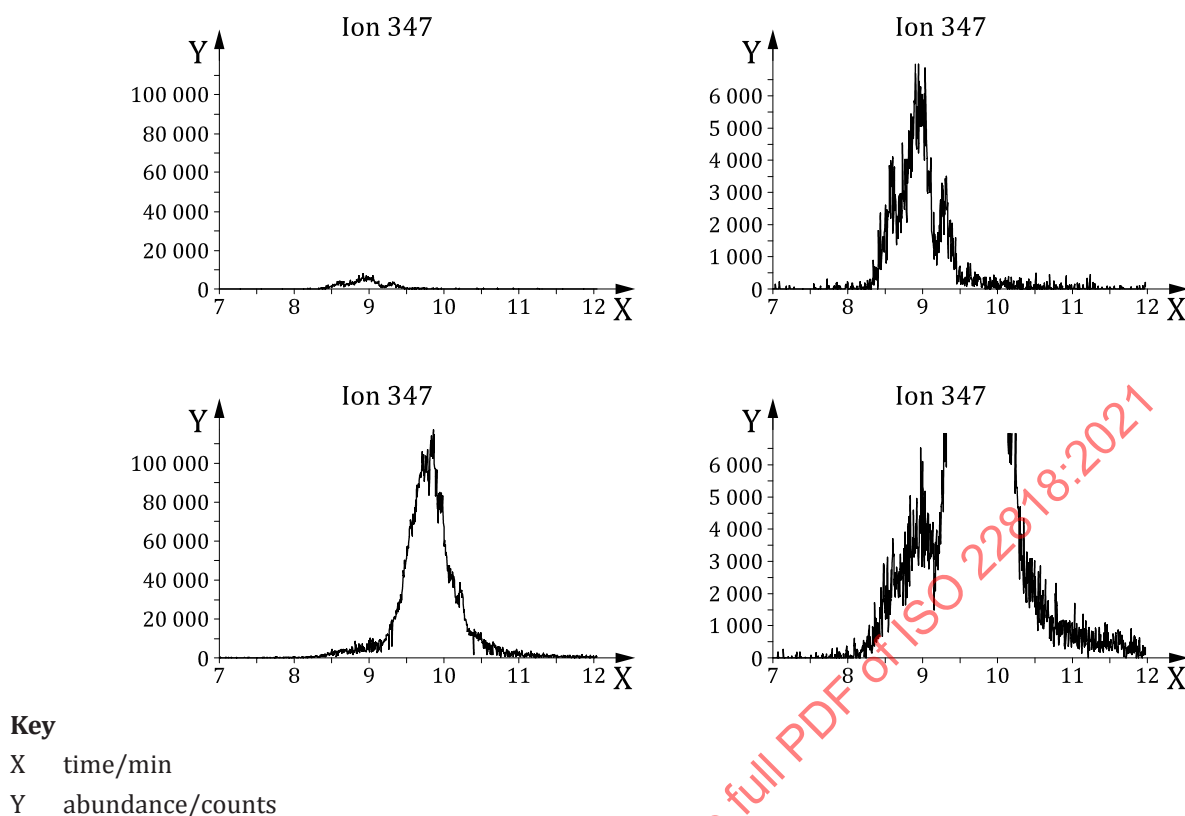


**Key**

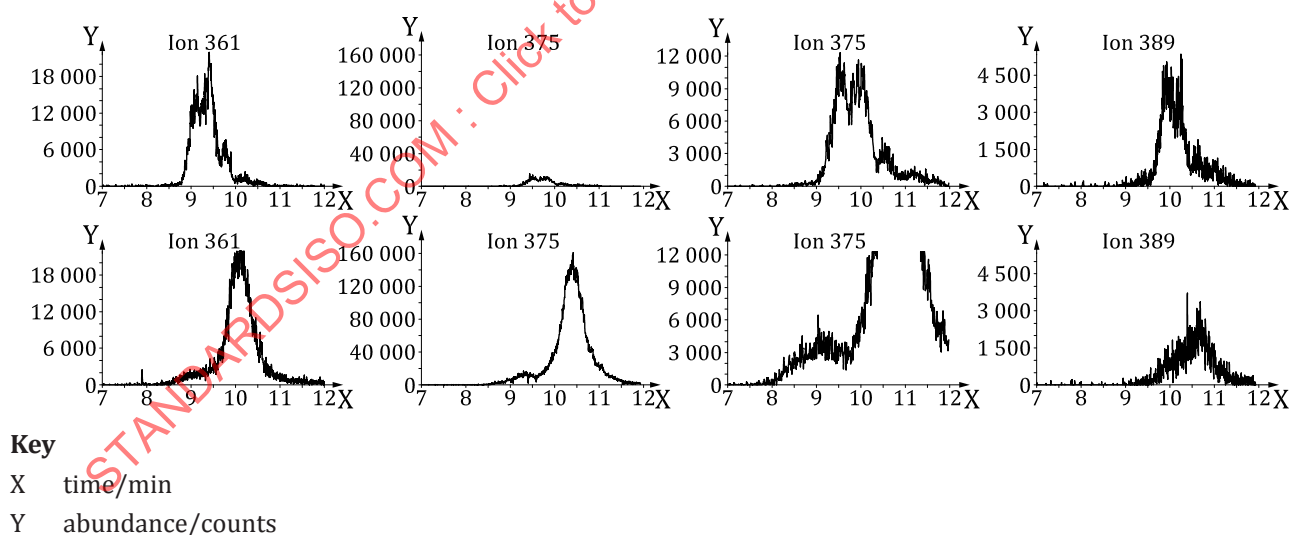
X time/min

Y abundance/counts

**Figure A.2 — Examples for matching samples compared with SCCPs standard 59 % Cl, upper chromatogram standard, lower chromatogram sample**



**Figure A.3 — Examples of partly matched samples compared with SCCPs standard 59 % Cl, upper chromatogram standard, lower chromatogram sample**



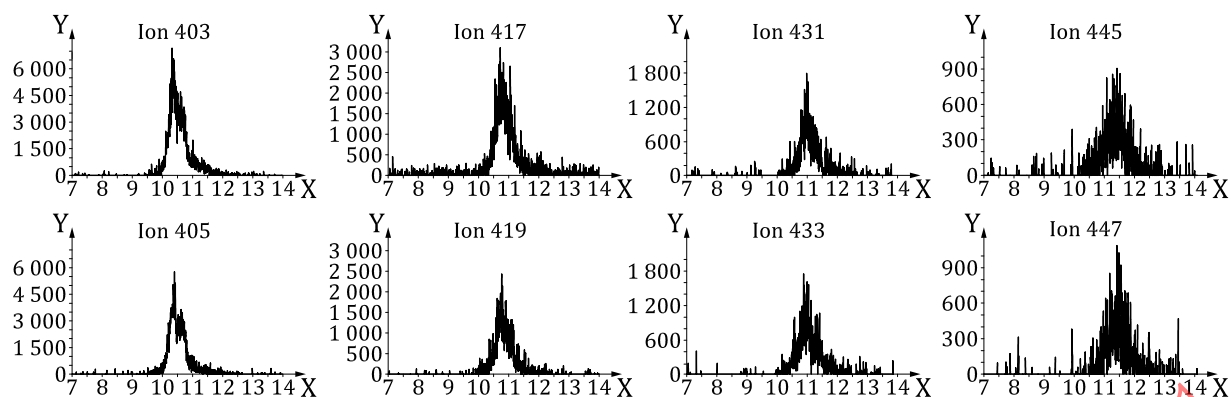
**Figure A.4 — Examples of samples with no match compared with SCCPs standard 59 % Cl, upper chromatogram standard, lower chromatogram sample**

In [Figure A.5](#) the used ion traces of MCCPs standard 55 % Cl are seen.

In [Figure A.6](#) examples for matching samples are compared with MCCPs standard 55 % Cl.

Always the upper chromatogram shows the standard, the lower chromatogram shows the sample.

In [Figure A.7](#) examples of partly matched samples are compared with MCCPs standard 55 % Cl. In [Figure A.8](#) examples of samples with no match are compared with MCCPs standard 55 % Cl.

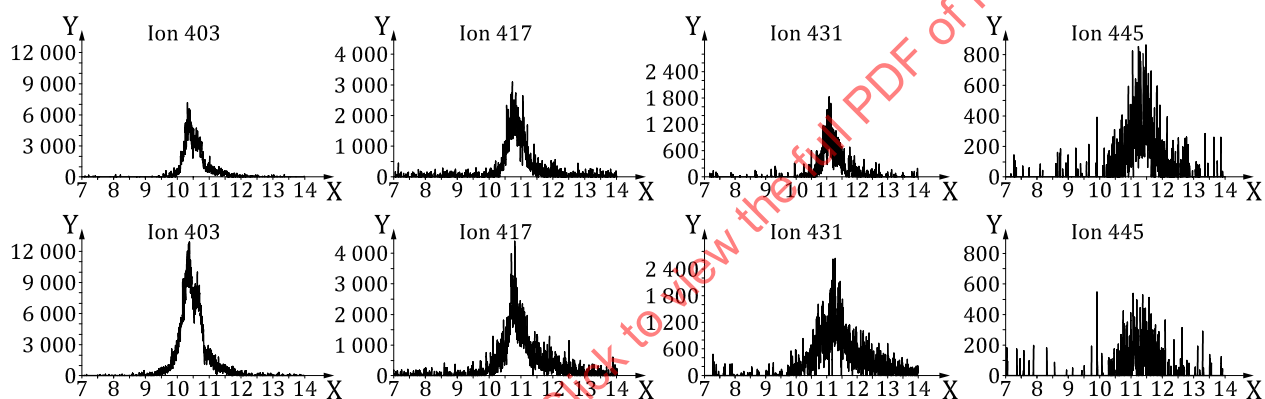


**Key**

X time/min

Y abundance/counts

**Figure A.5 — MCCPs standard 55 % CI, different ion traces**



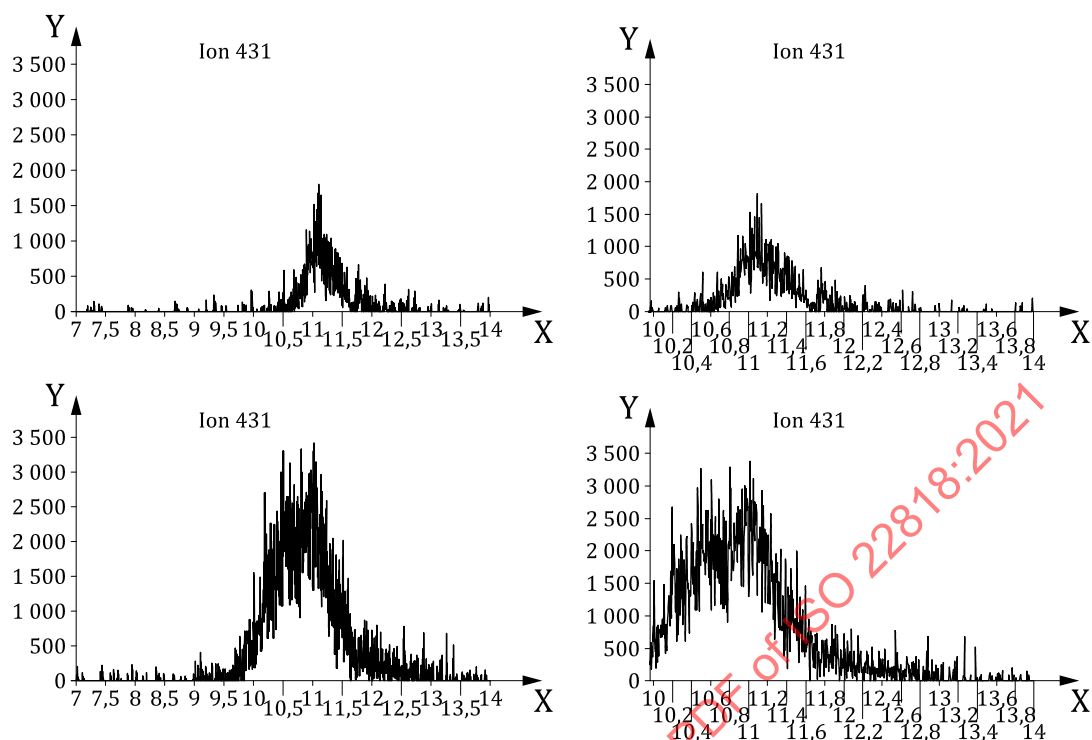
**Key**

X time/min

Y abundance/counts

**Figure A.6 — Examples for matching samples compared with MCCPs standard 55 % CI, upper chromatogram standard, lower chromatogram sample**

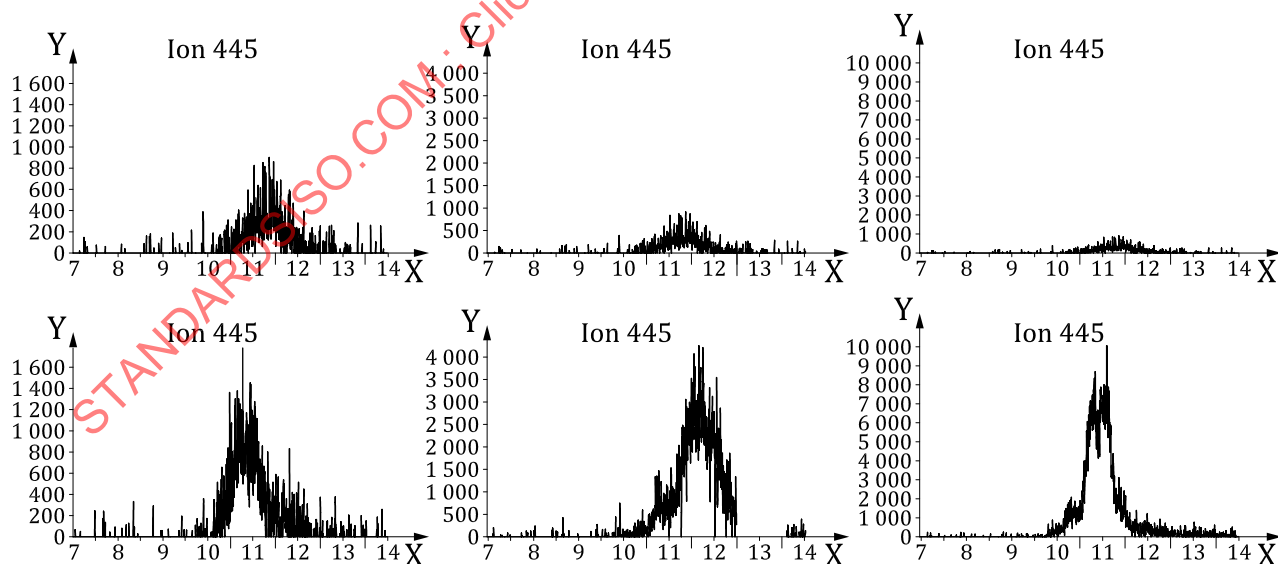


**Key**

X time/min

Y abundance/counts

**Figure A.7 — Example of a partly matched sample compared with MCCPs standard 55 % Cl, upper chromatogram standard, lower chromatogram sample**

**Key**

X time/min

Y abundance/counts

**Figure A.8 — Examples of samples with no match compared with MCCPs standard 55 % Cl, upper chromatogram standard, lower chromatogram sample**